

# CAVIUS CO ALARM



Carbon monoxide alarm device  
Commercial reference : 4002-001

**PLEASE READ THE USER GUIDE CAREFULLY BEFORE USE AND RETAIN FOR FUTURE USE!**

This Cavius carbon monoxide (CO) alarm is designed and tested to detect CO in private homes, camping trailers, mobile homes and caravans. It will provide early warning of the presence of CO.

### Information about carbon monoxide:

CO - Carbon monoxide - is known as the "silent killer" because it is odourless, tasteless and colourless. It can kill in few minutes.

This apparatus may not prevent the chronic effects of Carbon Monoxide exposure.

All people are at risk for CO poisoning. Unborn babies, infants, the elderly, and people with chronic heart disease, anemia, or respiratory problems are generally more at risk than others.

The apparatus will not fully safeguard individuals at special risks

Breathing CO can cause headache, dizziness, vomiting, and nausea. If CO levels are high enough, you may become unconscious or die.

### 1. Technical information

**Diameter:** 40mm **Height:** 38mm.

**Type of alarm:** Type B apparatus with FIGARO electromechanical CO sensor.

**Battery:** Powered by a non-replaceable 3V DURACELL CR123 Lithium battery with 10-year life (included).

**IMPORTANT: Do not try to replace the battery. Replace the product if the battery fails.**

**Product Life:** 10 years after manufacturing date.

**Complies to standards:** EN50291-1:2018, EN50270, EN50271, EN60335, RoHs, REACH.

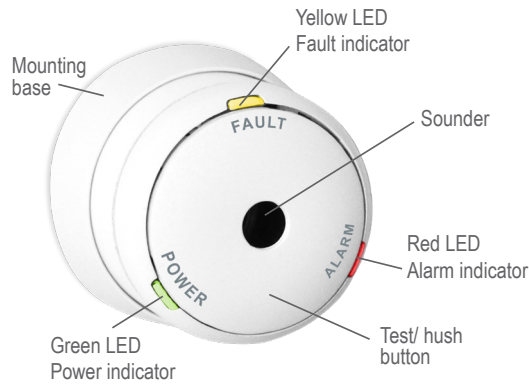
**Working condition:** -10 to +40°C, 30 to 95% non-condensing.

**Storage/Transport:** -20 to +50°C, 10 to 95% non-condensing.

**Alarm Sound Level:** The minimum sound level is 85 dB at 3 meters.

### 2. The best areas to install your CO alarm

- Ideally, an apparatus should be installed in every room containing a fuel-burning appliance.
- Near bedrooms and living areas.
- On each level of your home.
- 1 to 3 meter away from all fuel burning appliances.
- At eye level to allow optimum monitoring of the indicator lights.



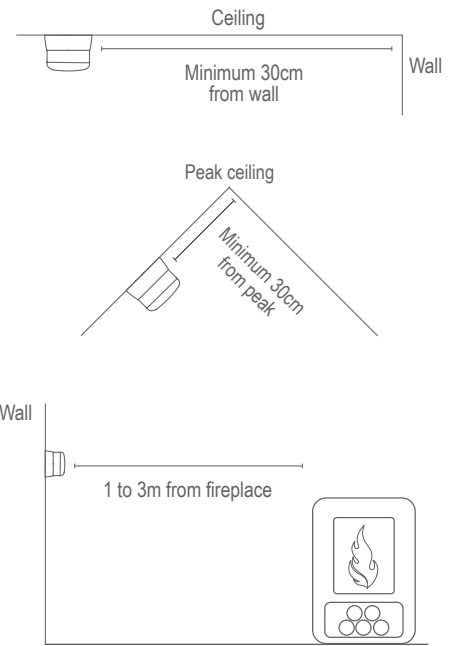
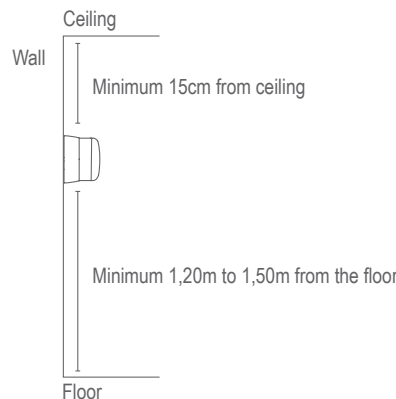
● Recommended CO alarm location

### 3. Areas where NOT to install CO alarms

- In an enclosed space (for example in a cupboard or behind a curtain).
- Where it can be obstructed (for example by furniture).
- Directly above a sink.
- Next to a door or window.
- Next to an extractor fan.
- Next to an air vent or other similar ventilation openings.
- In an area where the temperature may drop below -10 °C or exceed 40 °C.
- Where dirt and dust may block the sensor.
- In a damp or humid location.
- In the immediate vicinity of a cooking appliance.

### 4. Placement:

The CO alarm is designed to be installed on the wall or a ceiling.



### 5. Installing your CO alarm:

**CAUTION: This alarm should be installed by a competent person.**

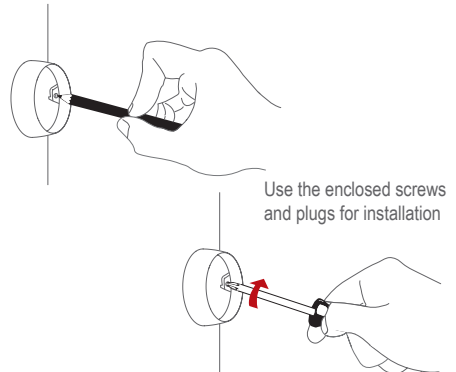
The installation of this device should not be used as a substitute for proper installation, use and maintenance of fuel burning appliances, including appropriate ventilation and exhaust systems. It does not replace a smoke alarm.

#### Installation with screw and plug:

Detach the alarm from the mounting base by twisting counter clockwise.

Use the mounting base to mark up **horizontally** the screw holes on the wall.

Mark up screw holes with a pen



Attach the alarm by twisting clockwise.

**Please note:** The label in the product must not be removed as it contains important information regarding

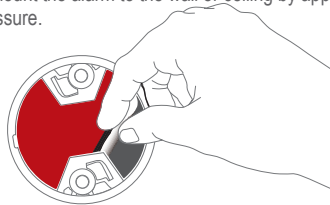
the product.

#### Installation with adhesive tape:

1. Choose a suitable spot. Make sure that the mounting area is stable, dry and free of dust and grease. Check that the surface is flat. Once assembled the alarm can not be removed or repositioned.

2. Remove the protective foil from the adhesive tape.

3. Mount the alarm to the wall or ceiling by applying light pressure.



#### 6. Test function:

After installation and at least once per quarter, test your alarm to make sure it is operating correctly. It is recommended to check visually every week if the green LED flashes correctly (every 60sec)

When the top button is pressed the alarm sounder will sound, and when the button is released, the alarm will make a self-test of the sensor and battery for approximately 9 seconds. During this delay the three LEDs will be flashed in sequence. The result of the test will be indicated after the test has been completed.

If the test passes, the alarm indication will be triggered for one sound sweep and the green LED will flash for 3 sec. If the test fails, a fault indication will be given (See section 11).

After the test function is performed, the alarm will need to recover for one minute before the next test can be done (to allow the sensor chamber to re-settle after the test current is applied).

The alarm will also do a self-test every 24 hour and test the sensor for faulty sensor, drift or short circuit.

**TIP:** It is safe to cover the sound output hole with your finger during the testing to minimize the sound level emitted.

#### 7. Normal mode:

In normal mode, POWER indicator (Green LED) will flash every 60 seconds

#### 8. Alarm mode:

When a dangerous concentration of CO is detected, the CO alarm will go into 'Alarm Mode'. It will be indicated by a series of repeated tones and the red LED will flash every 0.5 second.

#### 9. What to do if the alarm sounds:

- Keep calm and open all doors and windows.
- If the alarm continues to be activated, then evacuate the premises.
- Get medical help for anyone suffering the effects of carbon monoxide poisoning.
- Call the appropriate emergency or appliance servicing and/or maintenance agency.

#### 10. Hush function:

Hush of the alarm is only possible under a level of 200ppm. If you cannot hush the alarm, please refer to section 9.

When the alarm is under CO alarm warning, it can be silenced for about 10 minutes by pressing the TEST/HUSH button.

When battery fault the indication can also be silenced for up to 8 hours by a short press on the hush/test button. This function can only be carried out once during a fault.

#### 11. Fault warnings:

**Battery fault:** Battery low condition is indicated by a very short tone burst "beep" every 60 seconds with yellow LED flashing. Your CO alarm battery is low voltage or high inner resistance.

**Sensor fault:** Sensor fault is indicated by two very short tone burst "beeps" every 60 seconds with yellow LED flashing. Your CO alarm will not respond to CO.

**End of life:** End of sensor life is indicated by three very short tone burst "beeps" every 60 seconds with yellow LED flashing. Your CO alarm needs to be replaced.

#### 12. Maintenance:

- Check if the alarm sounds and indicators flash properly by pressing TEST/HUSH button at least once per quarter.
- Your alarm should be vacuum cleaned once per quarter to remove dust and dirt. It can be wiped with a damp cloth. Never use detergents or other solvents to clean the unit.
- Never attempt to disassemble the unit or clean inside.
- Commonly occurring materials, vapours or gases, e.g. in cleaning fluids, polishes, paints, cooking operations, etc., may affect the reliability of the alarm in the short or long term.
- When household cleaning supplies or similar contaminants are used, the area should be ventilated.
- Please do not expose to rain or moisture and do not knock or drop the detector. Open or tamper with the

alarm could cause malfunction.

#### Visual and sound patterns:

|                       |   |             |
|-----------------------|---|-------------|
| Normal mode           | Short flash green LED every 60sec               | - - - -     |
| Alarm mode            | Sound sweep with red LED                        | /// /// /// |
| Test pass             | 1 sound sweep and green LED will flash for 3sec | ///         |
| Battery fault         | 1 beep every 60sec with yellow LED              | - - - -     |
| Sensor fault          | 2 beeps every 60sec with yellow LED             | - - - -     |
| End of life of sensor | 3 beeps every 60sec with yellow LED             | - - - -     |

#### 13. Other information:

Do not paint the alarm.

Note the local country regulations regarding installation.

Disposal: Please dispose the product properly at the end of life. This is electronic waste which should be recycled.



The CE mark affixed to this product confirms its compliance with the European Directives which apply to the product.

All Rights reserved: CAVIUS Aps assumes no responsibility for any errors, which may appear in this manual. Furthermore, CAVIUS Aps reserves the right to alter the hardware, software, and/or specifications detailed herein at any time without notice, and CAVIUS Aps does not make any commitment to update the information contained herein. All the trademarks listed herein are owned by their respective owners. Copyright © CAVIUS Aps.

Developed by CAVIUS Aps Julsøvej 16, DK-8600  
Manufactured in P.R.C.