

CAVIUS™

USER GUIDE FOR

SMOKE

A L A R M



WIRELESS 
ALARM FAMILY

CAVIUS™

OPTICAL SMOKE ALARM DEVICE

Commercial reference: 2103-002

Developed by CAVIUS

The smoke alarm is designed for private homes, camping trailers, mobile homes and caravans. It is not recommended for boats.

**PLEASE READ THE USER GUIDE
CAREFULLY BEFORE INSTALLATION AND
RETAIN FOR FUTURE USE.**

CONTENTS

Technical information.....	1
1. How to set up and connect alarms.....	5
2. The best areas to install the smoke alarm:.....	10
3. Areas where NOT to install the smoke alarm:.....	12
4. Placement:	13
5. Installing the smoke alarm:.....	15
6. Test function:.....	18
7. Normal mode:.....	20
8. Alarm mode:.....	21
9. Pause/Hush function:.....	22
10. Add extra device:.....	24
11. Low battery signal:.....	25
12. Battery replacement:.....	26
13. Maintenance & trouble shooting:.....	27
14. Other information:.....	28

TECHNICAL INFORMATION

The maximum number of alarms that can be interlinked within a house group are 32.

Please note: These must be alarms from the CAVIUS

WIRELESS 
ALARM FAMILY

The distance between interlinked alarms depends on the house layout and they should always be tested after installation. It is not advised to get more than 10m distance between two smoke alarms.

Diameter: 65mm. Height: 44mm

The alarm is powered by a replaceable 3v CR123A lithium battery. Please note that correct operation of the smoke alarm device is ensured by use of one of the following batteries: DURACELL, PANASONIC or HUIDERUI.

Interlinked by RF: 868 MHz

Complies to standards: EN14604:2005 + AC:2008, EN300-220

CHAMBER
FILTER

The image shows an exploded view of a cylindrical device. At the top is a wide, shallow white ring labeled 'MOUNTING BASE'. Below it is a cylindrical component with a perforated mesh surface, labeled 'CHAMBER FILTER'. Underneath the filter is a white circular disc with a small central hole, labeled 'TEST BUTTON'. At the very bottom is another white circular disc with a larger central hole, labeled 'RED LED'. The components are arranged vertically, showing their relative positions and how they would fit together.

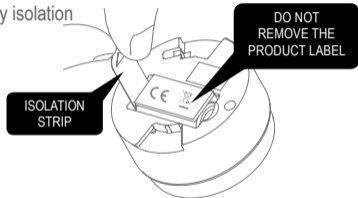
MOUNTING
BASE

TEST BUTTON

RED LED

1. HOW TO SET UP AND CONNECT ALARMS:

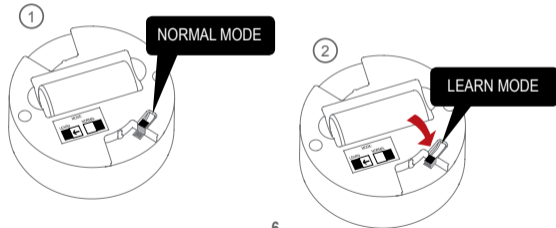
Start by pulling out the battery isolation strip as shown.



Please note: The product label must not be removed as it contains important information regarding the product.

5

All alarms that need to be connected in the house should be put into 'Learn Mode' by sliding the switch on the back of the alarm to the 'Learn Mode' position.



6

The red LED will light up to indicate that 'Learn Mode' has been selected.



Please note that when the alarms are placed in 'Learn Mode' they can't be inserted into the mounting base.
Do not take out the battery during 'Learn Mode' as this will interrupt the learn process.

7

Press the button at the top of one alarm only. This alarm will become the master and will start sending out a specific house code to the other alarms. The red LED will flash.

①



②



8

As the other alarms receive the specific house code, they will also flash the LED light.

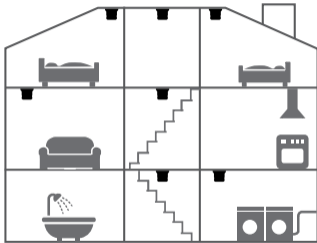


When all alarms flash the red LED, they are connected and can be switched out of 'Learn Mode' and installed.

2. THE BEST AREAS TO INSTALL THE SMOKE ALARM:

- Install an alarm between possible fire sources and bedrooms as a minimum.
- Install alarms on each floor of the house, in hallways and stairways.
- Alarms in each room such as bed rooms and living rooms.

Additional alarms increase the security.



■ Minimum

3. AREAS WHERE **NOT** TO INSTALL SMOKE ALARMS:

- In dusty rooms
- At the top of a high pointed ceiling, in ceiling corners, and within 50cm of a wall.
- In rooms where the temperature goes outside $+4^{\circ}$ to 38°C or above 90% relative humidity not condensing.
- In kitchens, garages, laundries, or too close to fireplaces; areas where either dampness, gases or smoke could occur.

Place the alarm where it is reachable in order to test the battery and for maintenance.

4. PLACEMENT:

The smoke alarm is design to be installed on a ceiling or wall.

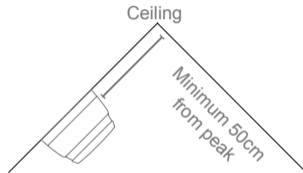
For ceiling installation:

The smoke alarm should be a minimum of 50cm from the wall.

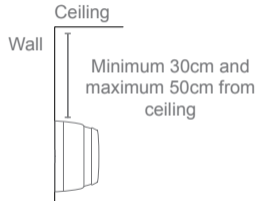


13

For cathedral or peak ceiling or wall installation:



With a minimum of one smoke alarm per floor and a maximum distance between smoke alarms of 10 meters.

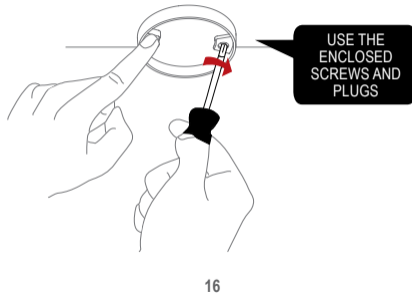
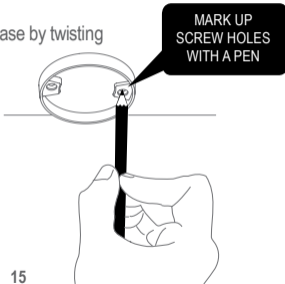


14

5. INSTALLING THE SMOKE ALARM:

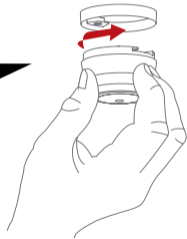
Detach the alarm from the mounting base by twisting counter clockwise.

Use the mounting base ring to mark the screw holes on the ceiling or the wall.



Once the mounting base is installed, attach the alarm by twisting clockwise until it clicks. If the battery is either missing or inserted incorrectly, or the switch is in 'Learn Mode', the smoke alarm will not be able to click into the mounting base.

CLICK THE SMOKE
ALARM FIRMLY INTO THE
BASE TO LOCK



6. TEST FUNCTION:

After installation, and at least once per quarter, test all of your alarms to ensure they are operating correctly and are within range of each other.

It is recommended to check visually every week if the LED flashes correctly (every 48sec.)

Press the test button on any alarm for at least 6.5 seconds (count 2 sets of 3 sound sweeps). This will send out a test signal from the alarm; all other connected alarms should receive the signal within a short time. The alarms will emit a short beep and the LED will flash every 8 seconds for 2 minutes.

NOTE: Test function also allows to send a depleted RF signal to ensure an optimal operation in normal conditions.

When the test signal is sent out, the alarms will respond in two ways:

1. A single beep every 8 seconds indicates that the alarms are connected and functioning.
2. Three short beeps every 8 seconds indicates a smoke sensor fault. The alarm should be cleaned by running the vacuum (on a low setting) around the smoke alarm chamber and tested again.

If required this indication can be stopped early on each alarm by a short press of the test button.

TIP: It is safe to cover the sound output hole with your finger during the testing to minimize the sound level emitted.

If the problem continues, please visit www.cavius.com for any trouble shooting.

7. NORMAL MODE:

In normal mode the LED will flash every 48 seconds to show correct operation.

8. ALARM MODE:

When a concentration of smoke is detected, the smoke alarm will go into 'Alarm Mode'. It will sound the alarm signal and the LED will flash.

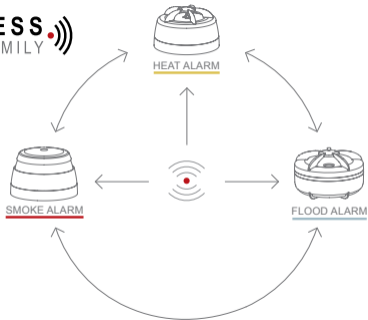
The smoke alarm will also transmit the alarm signal to the other connected alarms, which will also sound the alarm signal after a short delay.

Please note that only the originating alarm's LED will flash, so it can be identified.

9. PAUSE/HUSH FUNCTION:

If the smoke alarms are to set into a false alarm by cooking, fireplace, etc. they can be paused for 10 minutes by pressing the test button on the originating smoke alarm only (indicated by the flashing LED).

The reason of this is that it is necessary to locate the source of the alarm before using the hush function. This is to make sure that it is not a life threatening situation.



10. ADD EXTRA DEVICE:

All CAVIUS interconnected alarms within the



can be added to the system as they run on the same frequency and use the same data protocol. This means that the wireless system can consist of a combination of smoke, heat, flood etc.

Place all alarms into 'Learn Mode' and repeat section 1.

Always test connection to all devices by repeating test function section 6 after adding devices.

11. LOW BATTERY SIGNAL:

Your product has a 5Y battery life.

When the battery is starting its end of life, a short beep will sound out every 48 seconds for 30 days.

The alarm effected by the low battery will only beep, no other connected alarms will sound.

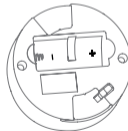
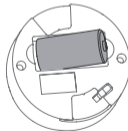
It is safe to change batteries in the alarms without going through the learn process again – they will not forget the codes during the battery change process.

12. BATTERY REPLACEMENT:

To replace the battery, detach the smoke alarm from the mounting base by twisting counterclockwise.

Replace the battery respecting the polarities.

Attach the alarm in the mounting base by twisting clockwise until it clicks, and test the alarm.



13. MAINTENANCE & TROUBLE SHOOTING:

- The smoke alarm should be vacuum cleaned once per quarter, to remove dust particles, and it can be wiped with a damp cloth. (Do not open the alarm).
- High humidity condensing which can be resolved by drying the smoke alarm.

If the smoke alarm does not work when the test button is pushed, the probable cause is a faulty battery. Check if the battery is worn out and replace it. **Always test the alarm after replacement of battery.**

If the problem continues, please visit www.cavius.com for any trouble shooting

14. OTHER INFORMATION:

Do not paint the alarm.

Note the local country regulations regarding installation.

Disposal: For battery and product, please dispose properly at the end of life. This is electronic waste which should be recycled.

Please note local regulations about information to your insurance company regarding installed smoke alarms.

The CE mark affixed to this product confirms its compliance with the European Directives which apply to the product and, in particular, its compliance with the harmonized specifications of standard EN 14604 relating to Construction Products Regulation 305/2011.



0333

EN 14604:2005 + AC :2008
DoP no.: 2103-002

Download DoP document: www.cavius.com



DEVELOPED BY:

CAVIUS Aps

Julsøvej 16, DK-8600

Manufactured in P.R.C.

CAVIUS™

CAVIUS™



WIRELESS 
ALARM FAMILY